

cornerstone



double sections



Scan on your Mobile Device
to get your Digital Brochure



www.modulinepenticton.ca

Model 286CO5601 - Hawkins

Image on the cover is shown with options:

- 20' Dormer with Fiber Cement Shakes & Web
- 6/12 Roof Pitch
- Fiber Cement Siding w/ Faux Stone
- Wolfe Creek Windows



Cornerstone Double Sections

Standard Features and Specifications

GENERAL CONSTRUCTION					
Built to Code	CSA Z-240 Zone 5				
Snow load	94psf/4.53kpa GSL 52psf/2.49kpa Design Load				
Insulation	Ceiling: R40 Walls: R22 Floor: R33 (Deleted with Foundation/Basement Option)				
Floor Joist	24 Wide 2x8	27 Wide 2x8	28-6 Wide 2x10	30 Wide 2x10	31-4 Wide 2x10
Decking	5/8" T&G OSB				
Roof Pitch	24 Wide 2.5/12	27 Wide 2.5/12	28-6 Wide 4/12	30 Wide 4/12	31-4 Wide 4/12
Roofing	Architectural Shingle				
Eaves	24 Wide	27 Wide	28-6 Wide	30 Wide	31-4 Wide
	Front 16"	16"	16"	16"	16"
	Side 16"	12" Fixed	12" Pullout	12" Pullout	12" Pullout
Rear	16"	16"	16"	16"	16"
Exterior Walls	8' 2x6				
Interior Walls	2x4 Vinyl Covered Drywall Panel				
Ceiling	Textured Drywall 24 Wide 27 Wide 28-6 Wide 30 Wide 31-4 Wide Vault Throughout Flat Flat				
Siding	Maintenance Free Vinyl Lap				
Fascia	White Wooden				
Windows	Double Glazed Low E, Argon, PVC w/ Vinyl sills. 2" Horizontal Blinds (excludes obscured & transoms)				
Doors	6 Panel Insulated with Dead Bolt Decorative Coach Light at all entrances (ex porch) 36" Front 32" Rear				
Porch	Covered with Gable Roof (plan specific) & Pot Light(s)				

SPACIOUS BATHS	
Ceramic Tile Backsplash	
Vanity Mirror with Bar Light	
One-Piece Fiberglass Tub/Shower with Single Lever Faucet	
Power Bath Fan on Separate Switch	
GFI Receptacle	
Comfort Height, Dual Flush Toilet	
Wall Mounted Over John Cabinet	
Shower Rod & Curtain	

UTILITY SERVICES	
Electrical Service	100 AMP
Heating	96% High Efficiency 2 stage Gas Furnace, A/C Ready
Water Heater	40 Gallon Electric
Communication Outlets	(1) Master Bedroom, (1) Living
Smoke & CO2 Detectors per code	
Wired, Plumbed & Vented for Washer & Dryer	
Shut Off Valves at all Sinks	
Exterior Frost Free Tap	
Exterior GFI Electrical Outlet	
Heat Tape Plug	

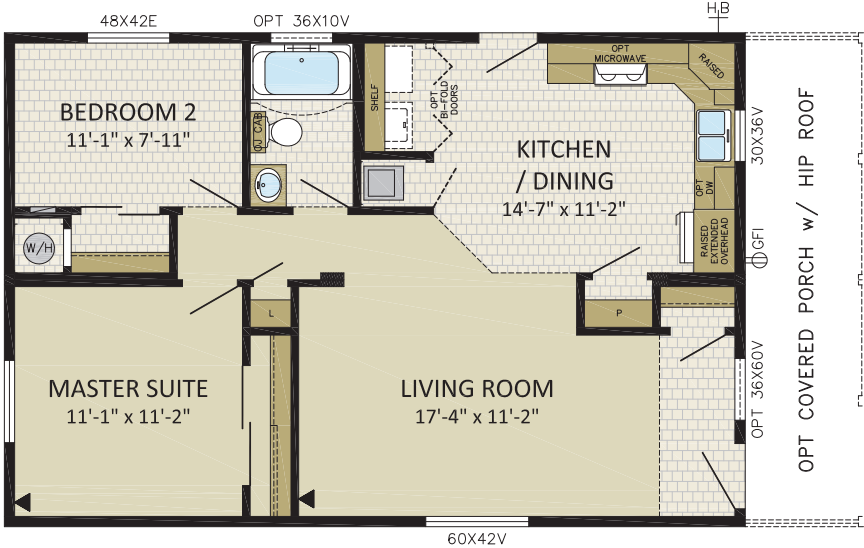
TASTEFUL INTERIORS	
Flooring	Carpet: Master Bedroom, Living, Hall, Gather Quality Cushioned Linoleum: All other areas
Designer Glass Light Fixtures	
Prefinished Interior Doors	
Double Rod in Master Bedroom Closet	
Linen Closet (plan specific)	
Utility Room Shelf	

BRIGHT, BEAUTIFUL KITCHENS	
European Deluxe Cabinetry	
Kitchen Island (plan specific)	
Raised Fridge & Corner Cabinets (plan specific)	
Ceramic Tile Backsplash	
Double Stainless Steel Kitchen Sink	
Chrome Single Handle Pull Out Faucet	
Bump Out at Kitchen Sink (plan specific)	
Window over Kitchen Sink (plan specific)	
Exterior Vented Range Hood with Light	
Fridge Opening 36"x72"	
18 cu ft, 2 Door Frost Free Refrigerator	
30" Electric Range	

10 Year Warranty

**24'
WIDES**

NEW



CANTON
 2 BDRMS, 1 BATH
24CO3604
 24' x 36' | 864 sqft

IMAGE SHOWN WITH OPTIONS:

- 3/4 STAR FRONT DOOR
- OPTIONAL COVERED PORCH WITH HIP ROOF
- FIBER CEMENT SIDING

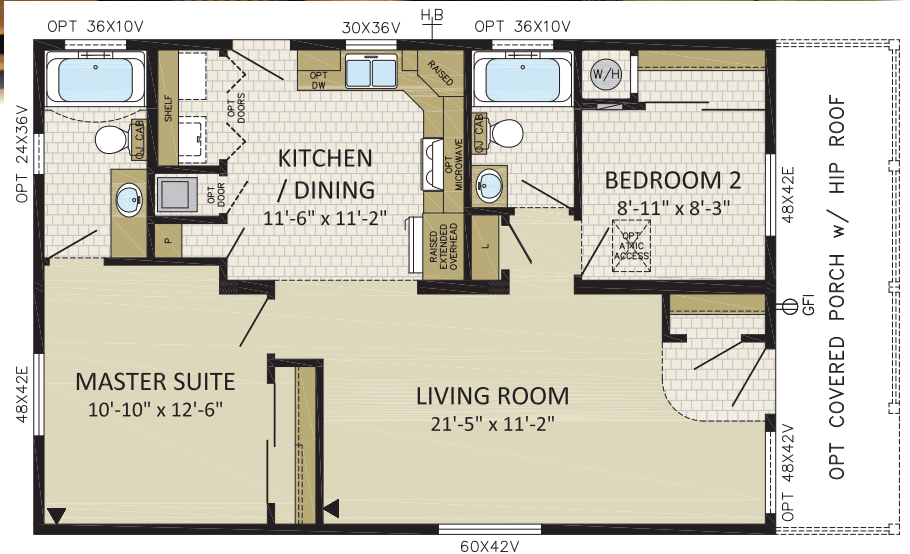


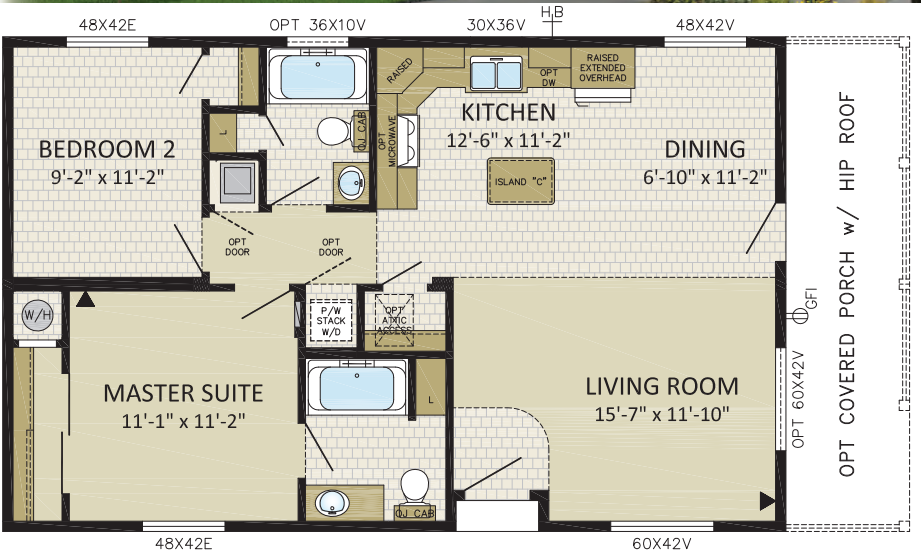
NEW

CAPELLA
 2 BDRMS, 2 BATHS
24CO3605
 24' x 36' | 864 sqft

IMAGE SHOWN WITH OPTIONS:

- VICTORIA FRONT DOOR
- OPTIONAL COVERED PORCH WITH HIP ROOF
- FIBER CEMENT SIDING





CAYLEY
 2 BDRMS, 2 BATHS
24CO3801
 24' x 38' | 912 sqft

IMAGE SHOWN WITH OPTIONS:

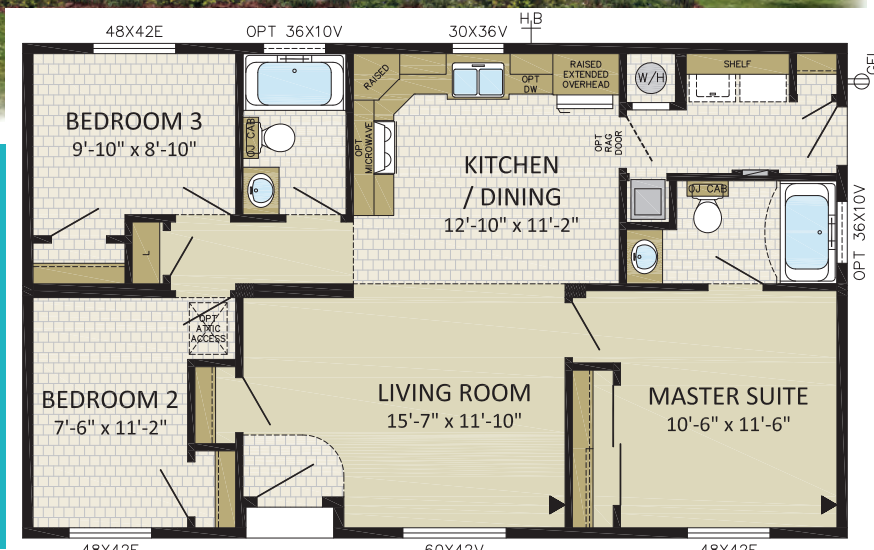
- 9-LITE FRONT DOOR
- 12' DORMER
- 8' BOX BAY
- OPTIONAL COVERED PORCH W/ GABLE ROOF
- WOLFE CREEK WINDOWS IN LR & MS



COLONEL
 3 BDRMS, 2 BATHS
24CO4001
 24' x 40' | 960 sqft

IMAGE SHOWN WITH OPTIONS:

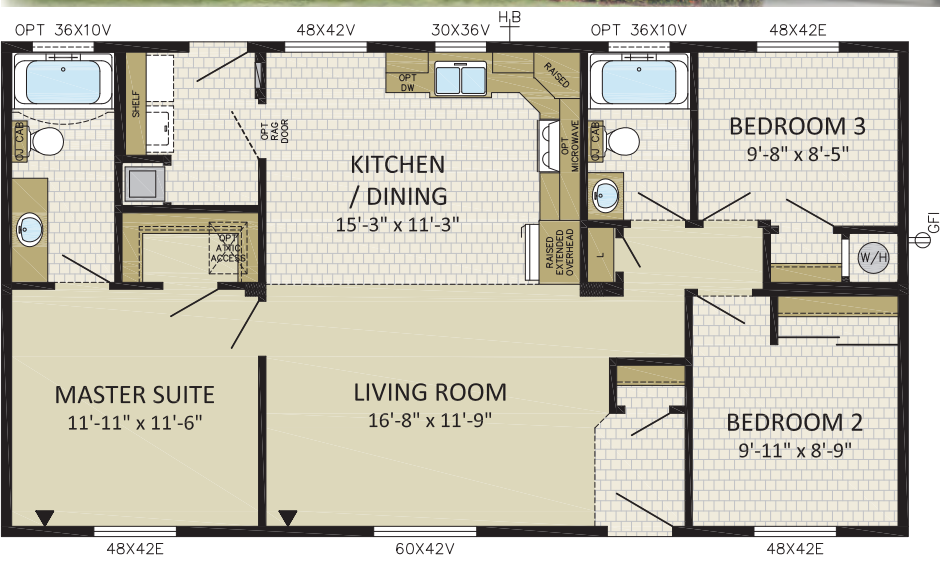
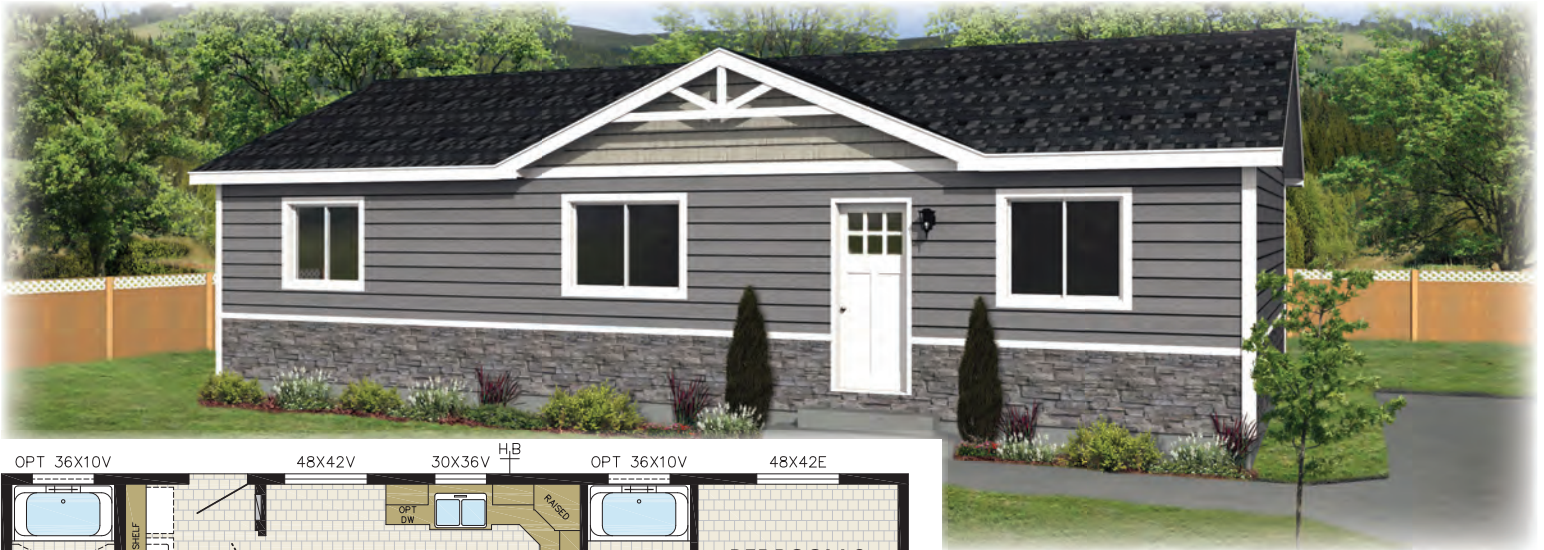
- STAR LIGHT FRONT DOOR
- 8' DORMERS & BOX BAYS W/ FIBER CEMENT SHAKES
- WOLFE CREEK WINDOWS IN MS, LR & BR#2
- FIBER CEMENT SIDING





CEDARBERG
 3 BDRMS, 2 BATHS
24CO4002
 24' x 40' | 960 sqft

IMAGE SHOWN WITH OPTIONS:
 - MODENA FRONT DOOR
 - OPTIONAL COVERED PORCH w/ HIP ROOF
 - FIBER CEMENT SIDING
 - 8' BOX BAY w/ FAUX STONE



CARMEL
 3 BDRMS, 2 BATHS
24CO4401
 24' x 44' | 1,056 sqft

IMAGE SHOWN WITH OPTIONS:
 - VICTORIA FRONT DOOR
 - 5/12 ROOF PITCH
 - FIBER CEMENT SIDING w/ FAUX STONE
 - 14' DORMER w/ WEB & FIBER CEMENT SHAKES

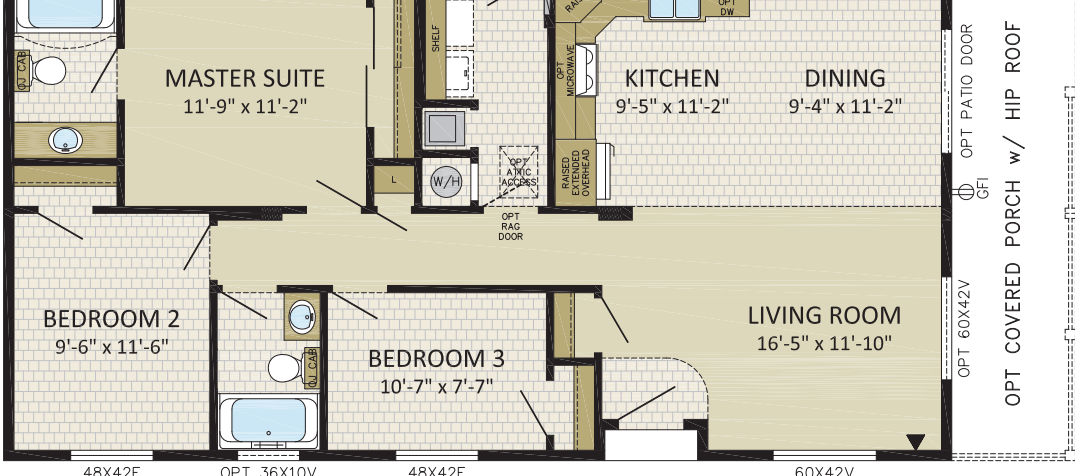
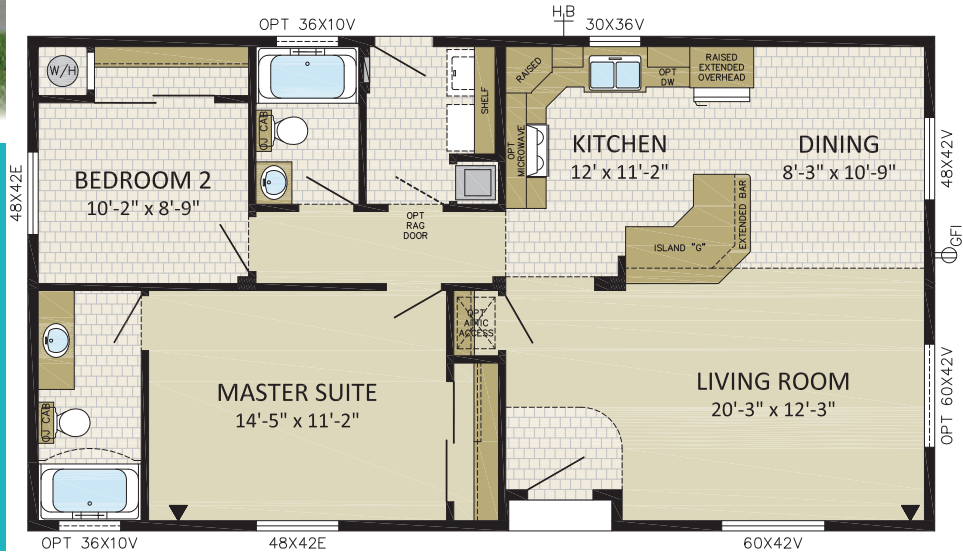


CAMERON

2 BDRMS, 2 BATH
24CO4402
 24' x 44' | 1,056 sqft

IMAGE SHOWN WITH OPTIONS:

- MODENA FRONT DOOR
- 8' BOX BAY & DORMER W/ FIBER CEMENT SHAKES
- 2' HIP ROOF
- WOLFE CREEK WINDOWS IN MS, LR & DR
- FIBER CEMENT SIDING

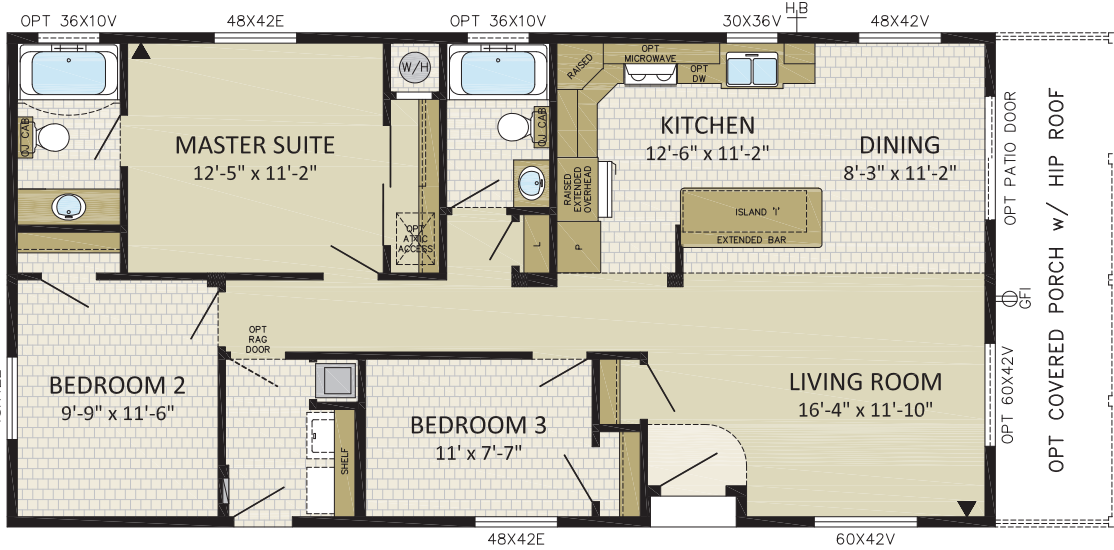


CALDERA

3 BDRMS, 2 BATHS
24CO4601
 24' x 46' | 1,104 sqft

IMAGE SHOWN WITH OPTIONS:

- 8' BOX BAY & DORMER W/ FIBER CEMENT SHAKES
- OPTIONAL COVERED PORCH W/ HIP ROOF & PATIO DOOR IN DR
- FIBER CEMENT SIDING
- WOLFE CREEK WINDOWS IN LR, BR #3 & BR #2
- OPT BATH WINDOW



CLINTON
 3 BDRMS, 2 BATHS
24CO4801
 24' x 48' | 1,152 sqft

IMAGE SHOWN WITH OPTIONS:

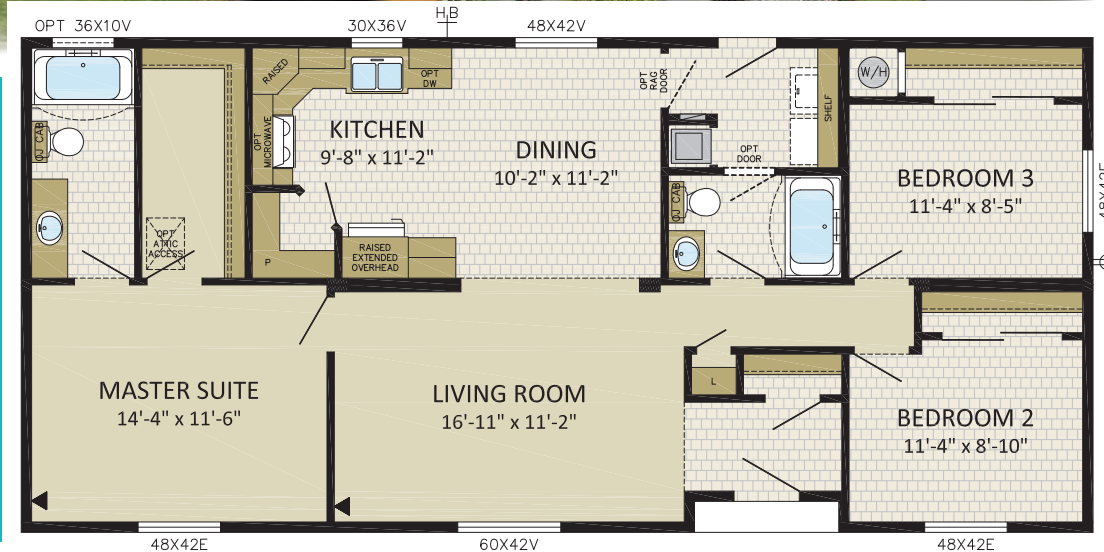
- 9-LITE FRONT DOOR
- OPTIONAL COVERED PORCH w/ GABLE ROOF
- FIBER CEMENT SIDING
- 18' DOUBLE DORMER w/ FIBER CEMENT SHAKES
- 5/12 ROOF PITCH
- GARAGE BY OTHERS



CHARLESTON
 3 BDRMS, 2 BATHS
24CO5201
 24' x 52' | 1,248 sqft

IMAGE SHOWN WITH OPTIONS:

- DOUBLE DORMER WITH FIBER CEMENT SHAKES
- FIBER CEMENT SIDING w/ FAUX STONE
- WOLFE CREEK WINDOWS IN MS, LR, BD#2 & BD#3
- 6/12 ROOF PITCH
- OPT DOOR w/ SIDE LIGHTS



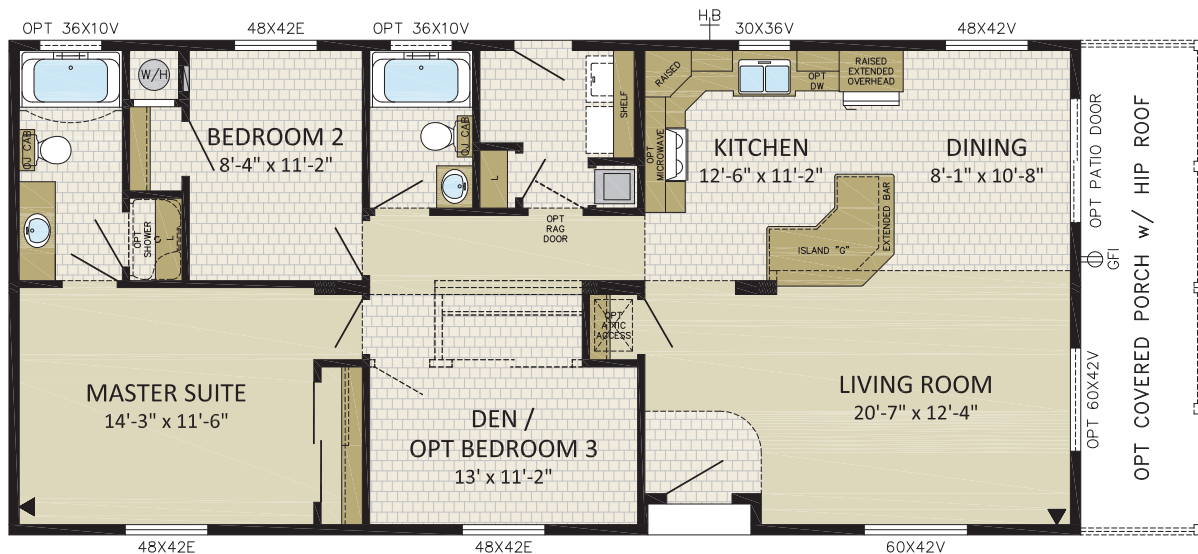


COTTONWOOD

2 BDRMS, 2 BATHS, DEN
24CO5202
 24' x 52' | 1,248 sqft

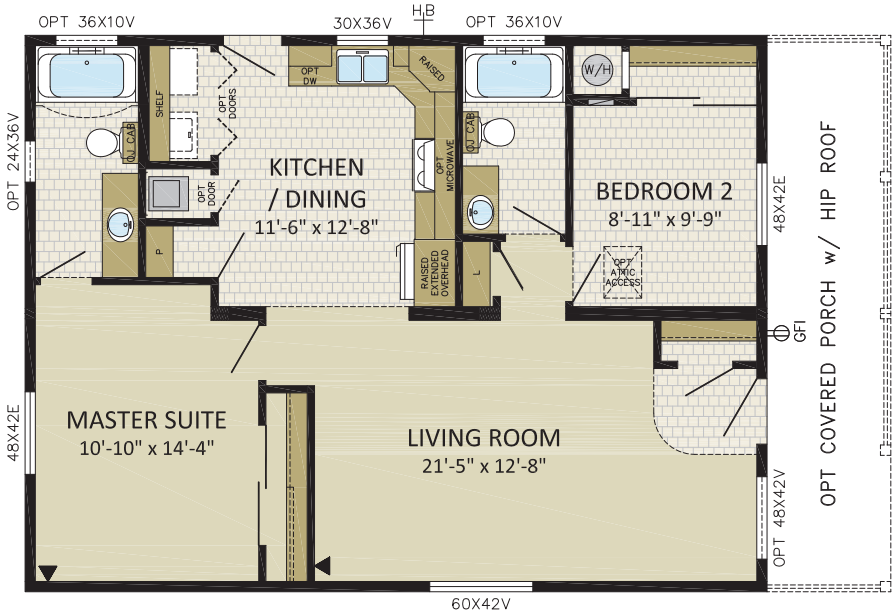
IMAGE SHOWN WITH OPTIONS:

- VICTORIA FRONT DOOR
- Two 14' DORMERS WITH FIBER CEMENT SHAKES
- FIBER CEMENT SIDING
- WOLFE CREEK WINDOWS IN LR, DEN & MS
- 6/12 ROOF PITCH



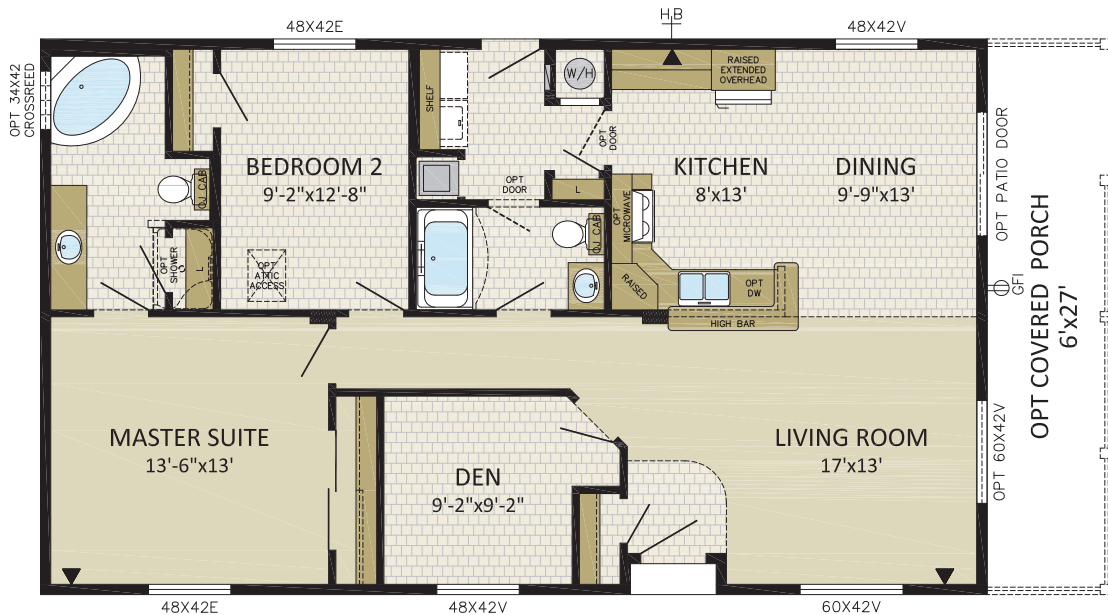
**27'
WIDES**

NEW



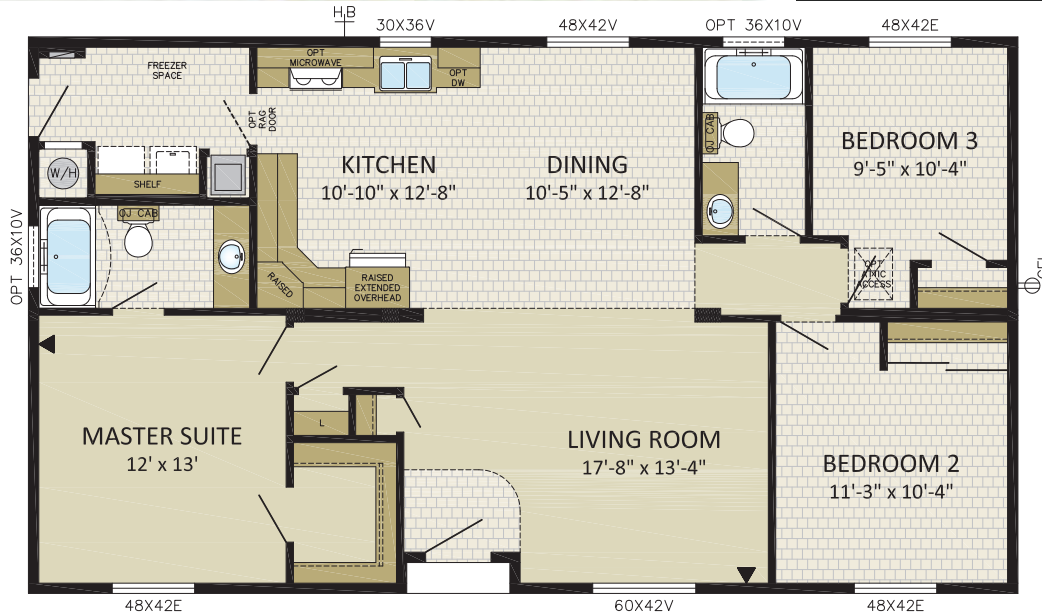
MADRID - 27CO3601
 2 BDRMS, 2 BATHS | 27' x 36' - 972 sqft
IMAGE SHOWN WITH OPTIONS:
 - STAR LIGHT FRONT DOOR
 - OPTIONAL COVERED PORCH w/ HIP ROOF
 - FIBER CEMENT SIDING
 - 5/12 ROOF PITCH

MORGAN
 2 BDRMS, 2 BATHS, DEN
27CO4601
 27' x 46' | 1,242 sqft
IMAGE SHOWN WITH OPTIONS:
 - OPTIONAL COVERED PORCH WITH HIP ROOF
 - FIBER CEMENT SIDING
 - BOX BAY AND DORMER WITH FIBER CEMENT SHAKES
 - 5/12 ROOF PITCH
 - SIDE DECK BY OTHERS





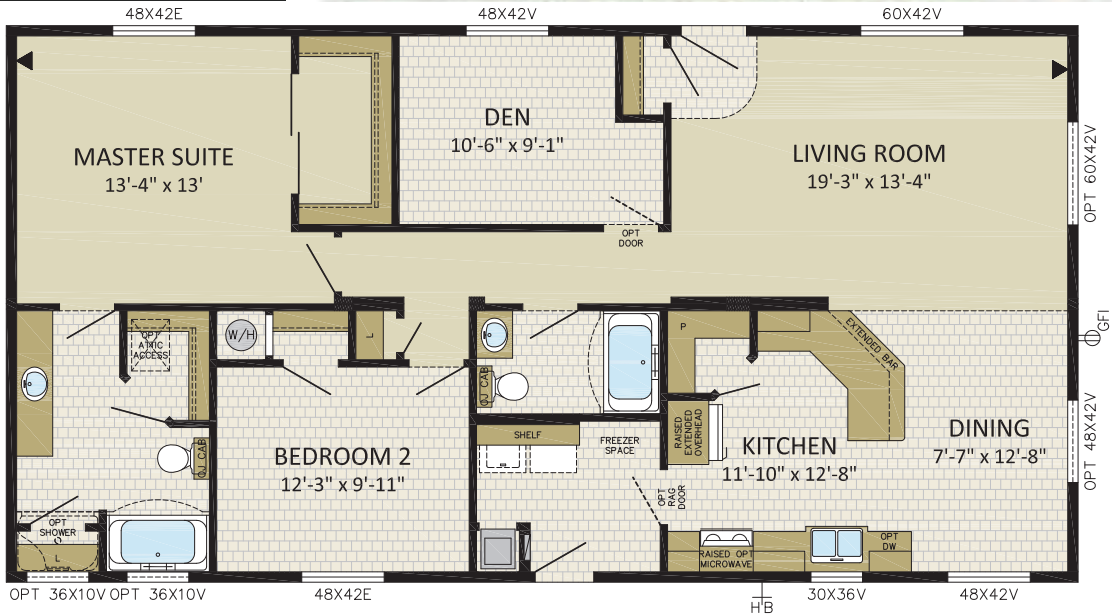
MONARCH
 3 BDRMS, 2 BATHS
27CO4801
 27' x 48' | 1,296 sqft
IMAGE SHOWN WITH OPTIONS:
 - 14' DORMER
 - HORIZON FIBER CEMENT PACKAGE
 - DECK BY OTHERS



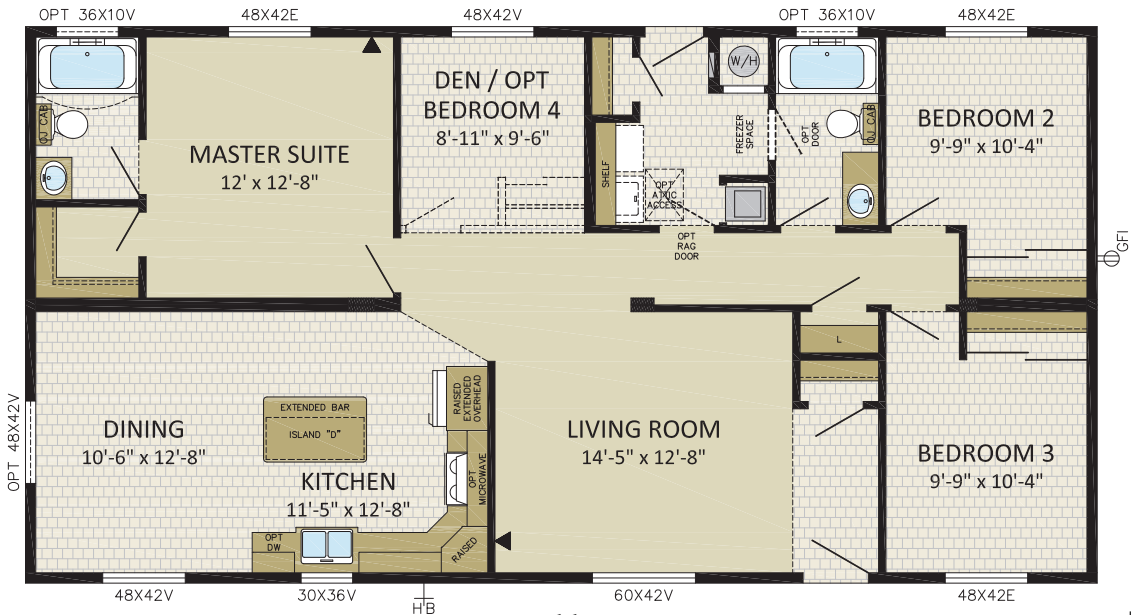
McARTHUR
 2 BDRMS, 2 BATHS, DEN
27CO5001
 27' x 50' | 1,350 sqft
IMAGE SHOWN WITH OPTIONS:
 - BOX BAY WITH FAUX STONE
 - FIBER CEMENT SIDING
 - OPTIONAL COVERED PORCH WITH GABLE ROOF
 - OPTIONAL WINDOWS & PATIO DOOR



MELVILLE
 2 BDRMS, 2 BATHS, DEN
27CO5202
 27' x 52' | 1,404 sqft
 IMAGE SHOWN WITH OPTIONS:
 - MODENA FRONT DOOR
 - 2' HIP ROOF ON END OF HOME
 - HORIZON FIBER CEMENT PACKAGE
 - 18' DOUBLE DORMER

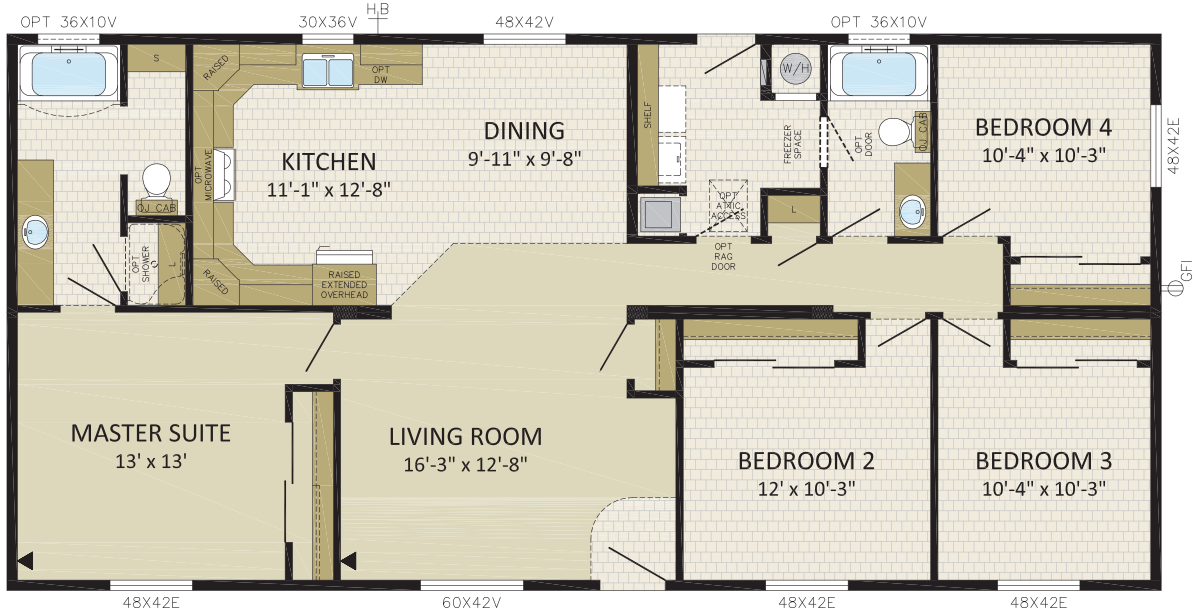


MARTINS
 3 BDRMS, 2 BATHS, DEN
27CO5203
 27' x 52' | 1,404 sqft
 IMAGE SHOWN WITH OPTIONS:
 - VICTORIA FRONT DOOR
 - 12' DORMER & BOX BAY W/
 HORIZON FIBER CEMENT PACKAGE
 - FIBER CEMENT SIDING
 - WOLFE CREEK WINDOWS IN DR, LR
 & BD#3

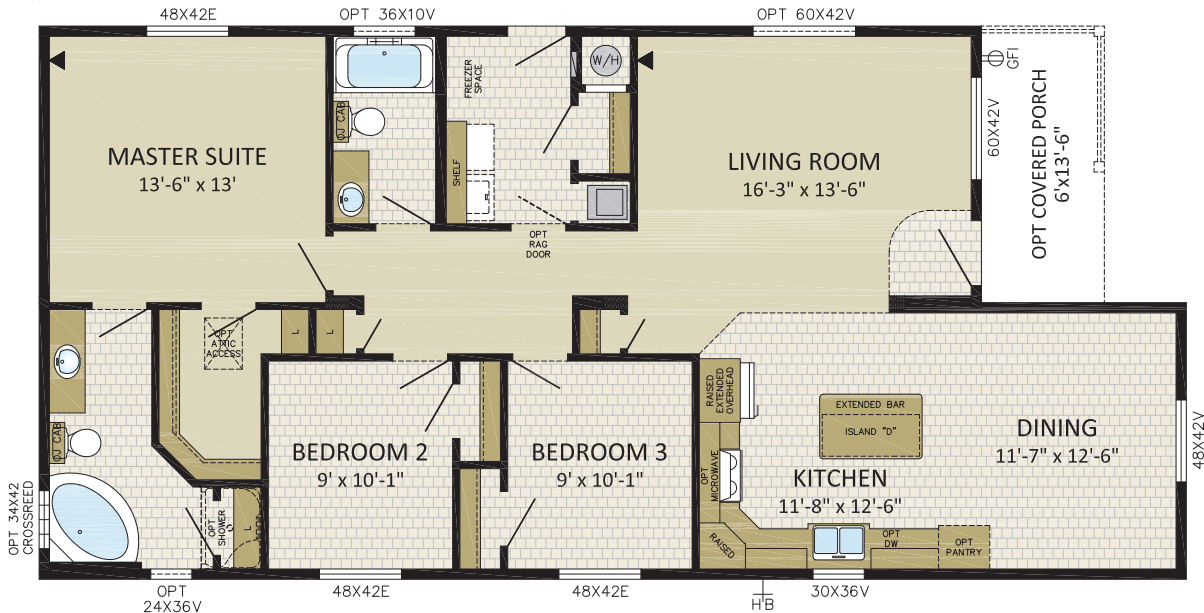




McCurdy
 4 BDRMS, 2 BATHS
27CO5603
 27' x 56' | 1,512 sqft
IMAGE SHOWN WITH OPTIONS:
 - MODENA FRONT DOOR
 - 18' DOUBLE DORMER & 12' DORMER
 W/ FIBER CEMENT SHAKES & WEB
 - 6/12 ROOF PITCH
 - FAUX STONE

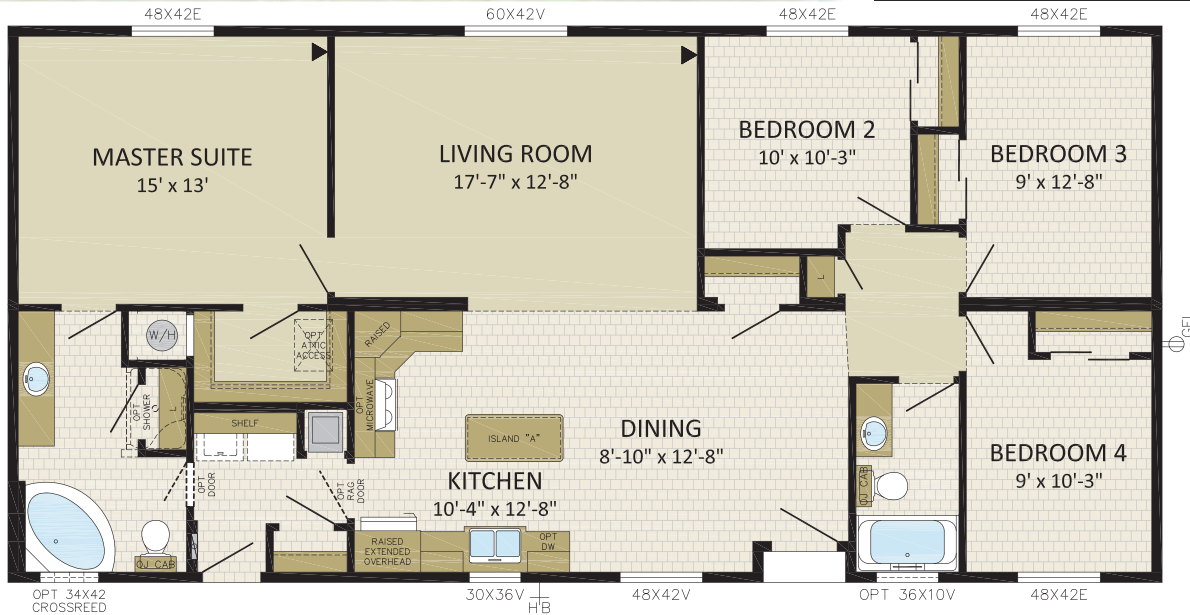


MERIDIAN
 3 BDRMS, 2 BATHS
27CO5604
 27' x 46'/56' | 1,377 sqft
IMAGE SHOWN WITH OPTIONS:
 - VICTORIA FRONT DOOR
 - WOLFE CREEK WINDOWS IN LR & DR
 - FIBER CEMENT SHAKES IN GABLES
 - 6' HALF PORCH
 - GARAGE BY OTHERS





MARTEL
 4 BDRMS, 2 BATHS
27CO5605
 27' x 56' | 1,512 sqft
IMAGE SHOWN WITH OPTIONS:
 - STAR LIGHT FRONT DOOR
 - 8' DORMER/BOX BAY W/ VERT. SIDING
 - FIBER CEMENT SIDING
 - WOLFE CREEK WINDOWS IN DR & BD#4
 - GARAGE BY OTHERS



MANSFIELD
 3 BDRMS, 2 BATHS
27CO5801
 27' x 58' | 1,566 sqft
IMAGE SHOWN WITH OPTIONS:
 - 18' DORMER W/ FIBER CEMENT SHAKES
 - FIBER CEMENT SIDING W/ FAUX STONE
 - OPTIONAL COVERED PORCH W/ HIP ROOF & PATIO DOOR IN DR
 - OPTIONAL 60X60 WINDOW IN LR



MONACO

3 BDRMS, 2 BATHS
27CO5802

27' x 58' | 1,566 sqft

IMAGE SHOWN WITH OPTIONS:

- VICTORIA FRONT DOOR
- 12' DORMERS W/ VERTICAL METAL SIDING
- PENTAVIEW WINDOW IN LR
- OPTIONAL 36x60 WINDOWS IN MS
- OPTIONAL 48x60 WINDOW IN DR



MANDARA

3 BDRMS, 2 BATHS
27CO6201

27' x 62' | 1,620 sqft

IMAGE SHOWN WITH OPTIONS:

- HORIZON FIBER CEMENT PACKAGE
- 2' STRETCH PORCH W/ HIP ROOF
- WOLFE CREEK WINDOW IN GATHERING ROOM



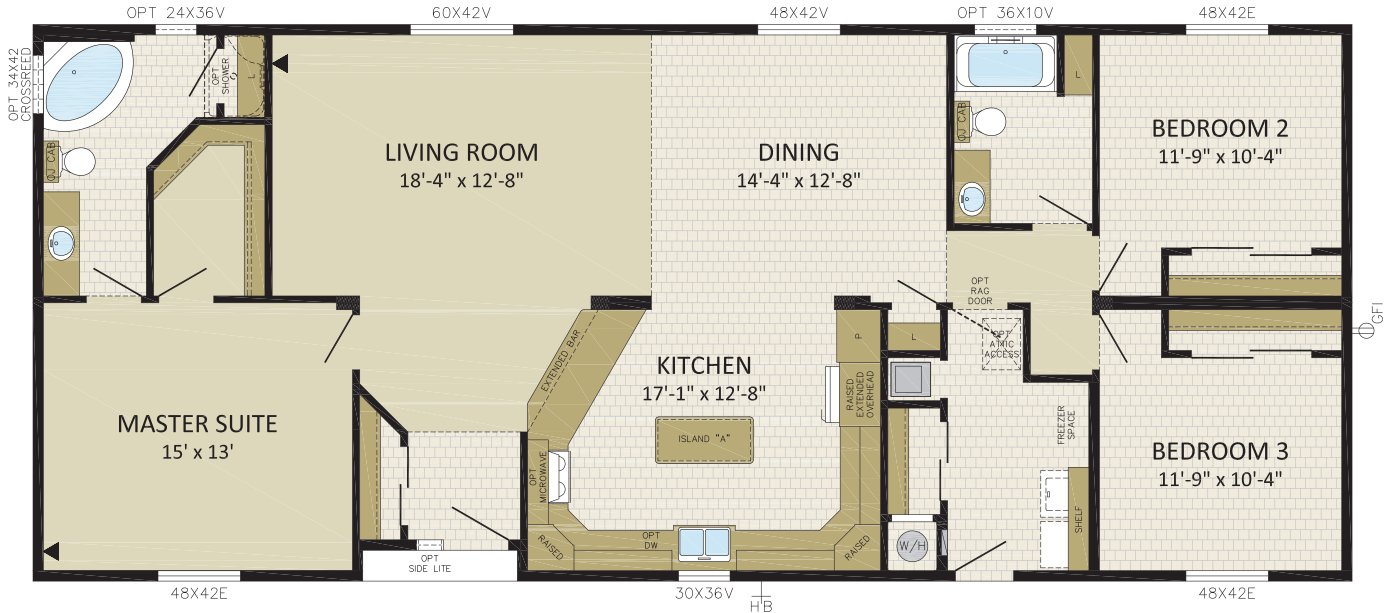
MUNRO

3 BDRMS, 2 BATHS
27CO6401

27' x 64' | 1,728 sqft

IMAGE SHOWN WITH OPTIONS:

- MODENA FRONT DOOR W/ SIDE LIGHT
- RIPPLE COVER HORIZON PACKAGE
- 8' BOX BAY W/ FAUX STONE
- DOUBLE DORMER W/ SHAKES



MIDWAY

3 BDRMS, 2 BATHS, DEN
27CO6602

27' x 66' | 1,782 sqft

IMAGE SHOWN WITH OPTIONS:

- BOX BAY W/ SHAKES
- MODENA DOOR W/ 2 SIDE LIGHTS
- WOLFE CREEK WINDOWS
- FIBER CEMENT SIDING
- 18' DOUBLE DORMER W/ SHAKES & WEB
- 2' HIP ROOF ON END WALL
- GARAGE BY OTHERS



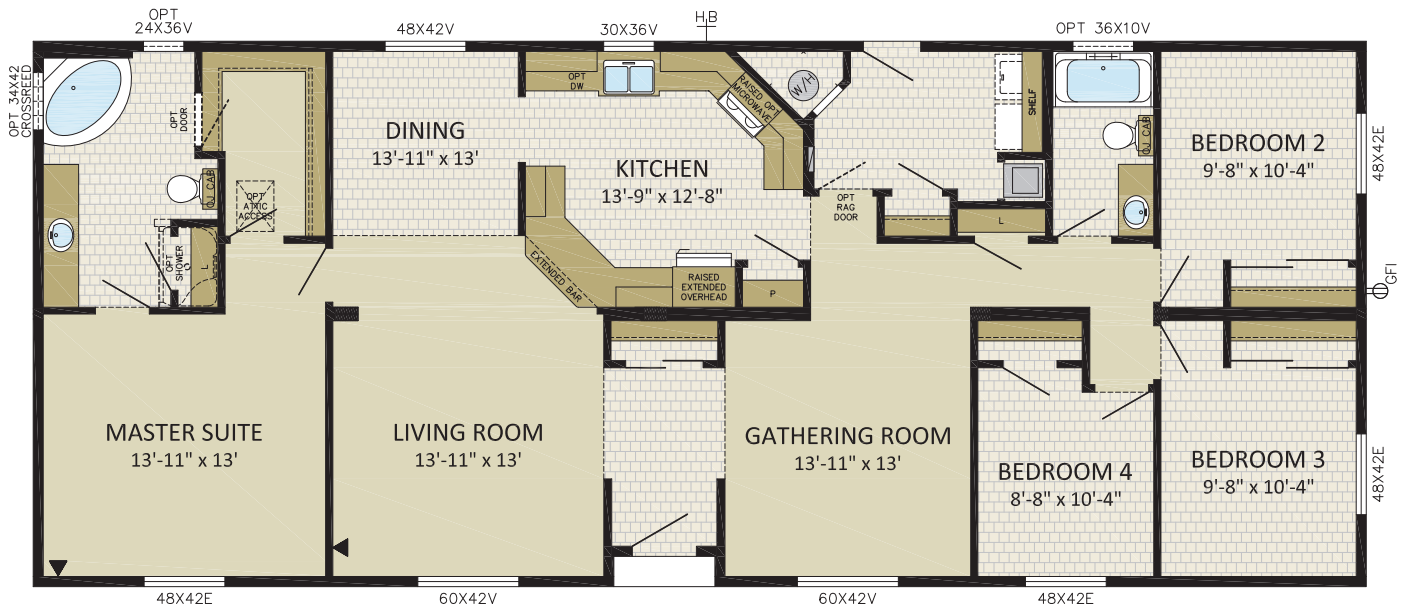


MEDFORD

4 BDRMS, 2 BATHS
27CO6603
 27' x 66' | 1,782 sqft

IMAGE SHOWN WITH OPTIONS:

- VICTORIA FRONT DOOR & WOLFE CREEK WIDOWS
- 24' DORMER W/ 8' BOX BAYS W/ FIBER CEMENT SHAKES
- 5/12 ROOF PITCH
- 20' DORMER W/ FIBER CEMENT SHAKES
- FIBER CEMENT SIDING



28'-6"
WIDES



HAYWARD
3 BDRMS, 2 BATHS
286CO5201

28'-6" x 52' | 1,482 sqft

IMAGE SHOWN WITH OPTIONS:

- MODENA FRONT DOOR
- SKYVIEW PACKAGE
- 2' HIP ROOF ON END OF HOME
- FIBER CEMENT SIDING W/ FAUX STONE
- WOLFE CREEK WINDOWS





HAWKINS
 3 BDRMS, 2 BATHS
286CO5601
 28'-6" x 56' | 1,596 sqft
IMAGE SHOWN WITH OPTIONS:
 - 20' DORMER W/ FIBER CEMENT SHAKES & WEB
 - 6/12 ROOF PITCH
 - FIBER CEMENT SIDING W/ FAUX STONE
 - WOLFE CREEK WINDOWS
 - GARAGE BY OTHERS



HARRISON
 3 BDRMS, 2 BATHS, OFFICE
286CO6402
 28'-6" x 64' | 1,824 sqft
IMAGE SHOWN WITH OPTIONS:
 - 20' DORMERS W/ WEB
 - HORIZON FIBER CEMENT PACKAGE
 - MODENA FRONT DOOR W/ SIDE LIGHT
 - OPT. MS CLOSET WINDOW



**30'
WIDES**



NEW

HAYES

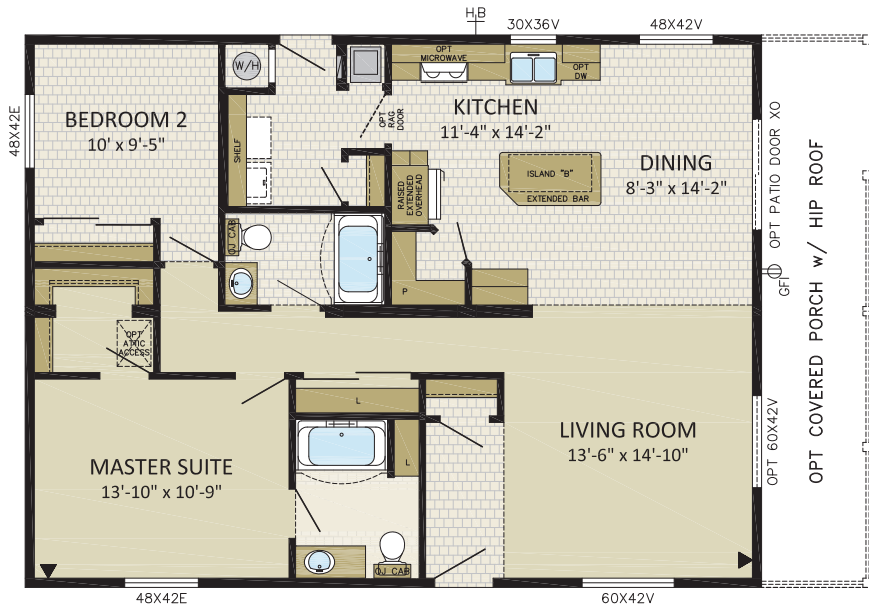
2 BDRMS, 2 BATHS

30CO4001

30' x 40' | 1,200 sqft

IMAGE SHOWN WITH OPTIONS:

- SKYVIEW WINDOW PACKAGE
- OPTIONAL COVERED PORCH W/ HIP ROOF
- OPTIONAL PATIO DOOR
- 5/12 ROOF PITCH



NEW

HADLEY

3 BDRMS, 2 BATHS

30CO5057

30' x 50/57' | 1,605 sqft

IMAGE SHOWN WITH OPTIONS:

- 8' BOX BAY W/ WOLFE CREEK WINDOW & FAUX STONE
- 9 LITE FRONT DOOR
- FIBER CEMENT SIDING W/ FAUX STONE & SHAKE ACCENTS
- OPTIONAL 2' HIPS ON FRONT OF HOME
- GARAGE BY OTHERS



31'-4"
WIDES

NEW



HALSTEAD

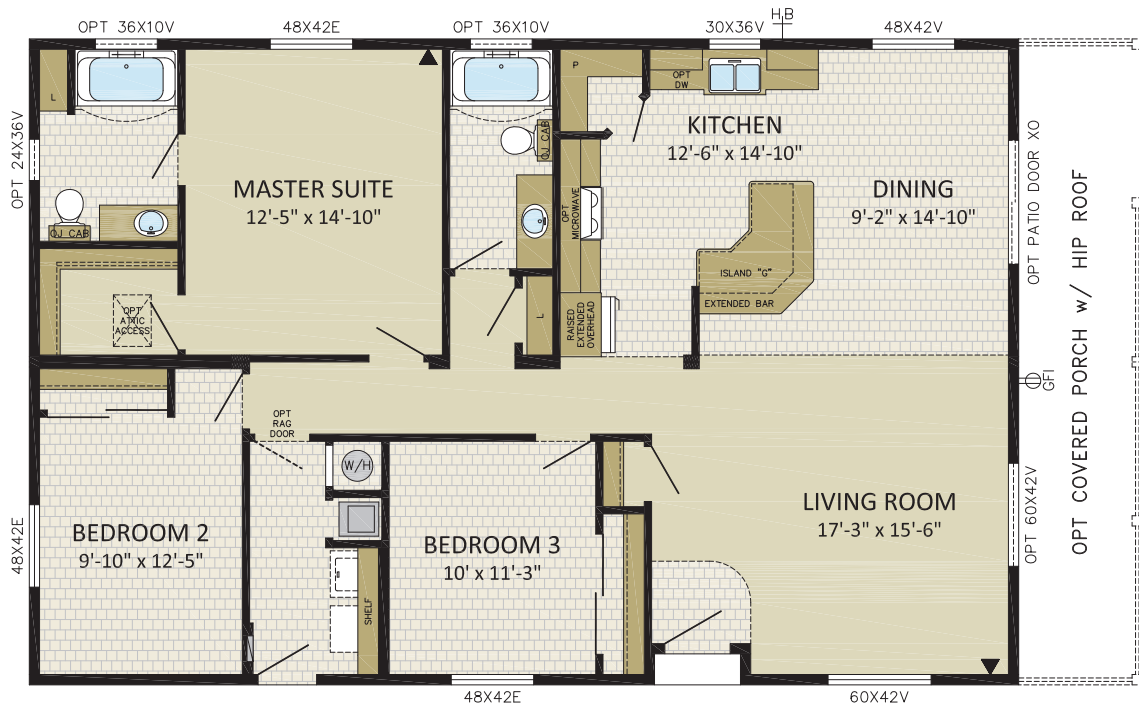
3 BDRMS, 2 BATHS

314CO4801

31'-4" x 48' | 1,504 sqft

IMAGE SHOWN WITH OPTIONS:

- RIPPLECOVE HORIZON PACKAGE
- 9 LITE FRONT DOOR & OPTIONAL PATIO DOOR
- OPTIONAL COVERED PORCH W/ HIP ROOF
- 12' DORMER W/ FAUX STONE ACCENT



NEW



HAMILTON

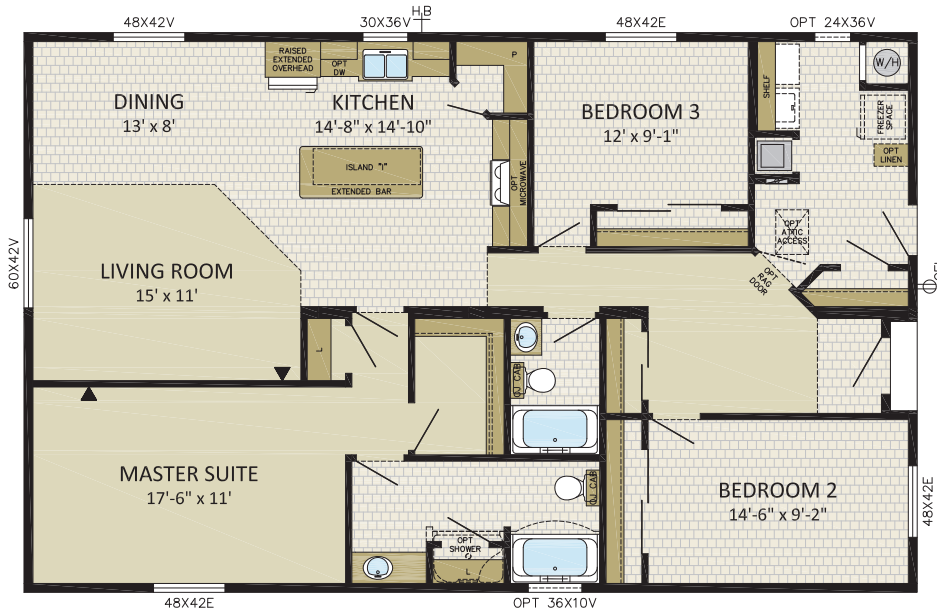
3 BDRMS, 2 BATHS

314CO5001

31'-4" x 50' | 1,567 sqft

IMAGE SHOWN WITH OPTIONS:

- VICTORIA FRONT DOOR
- 8' BOX BAY W/ OPT. WINDOW & SHAKES
- 2' HIP ROOF W/ OPT. SHAKES IN GABLE
- FIBER CEMENT SIDING
- GARAGE BY OTHERS



NEW

HILLCREST

3 BDRMS, 2 BATHS

314CO5601

31'-4" x 56' | 1,755 sqft

IMAGE SHOWN WITH OPTIONS:

- MODENA FRONT DOOR
- SKYVIEW WINDOW PACKAGE
- OPTIONAL WINDOWS
- DECK BY OTHERS



NEW



HARVARD

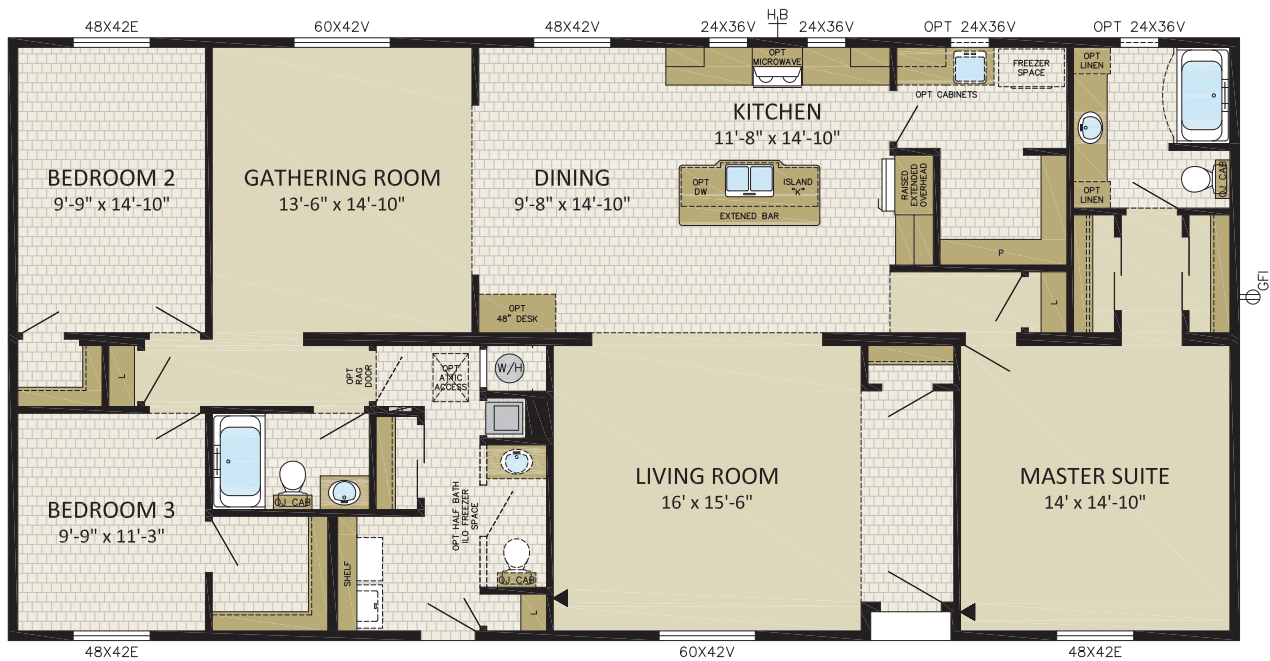
3 BDRMS, 2 BATHS

314CO6401

31'-4" x 64' | 2,005 sqft

IMAGE SHOWN WITH OPTIONS:

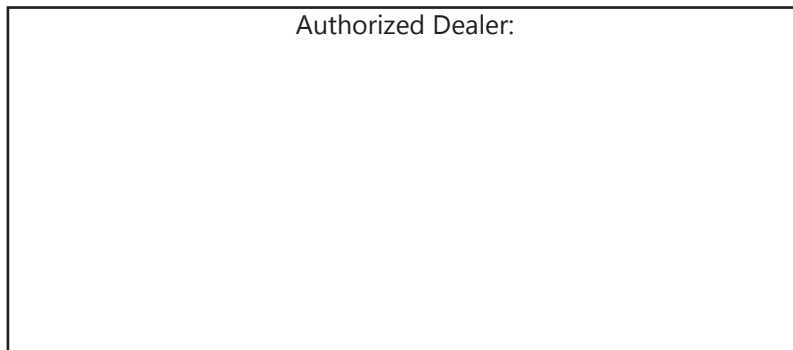
- DOUBLE DORMER W/ BOARD & BATTON VERTICAL SIDING
- VICTORIA FRONT DOOR & OPTIONAL LR WINDOWS
- 8' BOX BAY W/ FAUX STONE & OPTIONAL WINDOW
- 5/12 ROOF PITCH
- GARAGE BY OTHERS




www.modulinepenticton.ca



Authorized Dealer:



a proud supporter of Ronald McDonald House



1175 Railway Street
 Penticton, BC
 V2A 5X5
 P:250-493-0122
 F:250-493-0133

DISCLAIMER:

Due to continuous product development and improvement, prices, specifications, and materials are subject to change without notice or obligation. Square footage and other dimensions are approximate. Included images are artist renderings and are not intended to be an accurate representation of the home. Renderings and floorplans may be shown with optional features or third-party additions. Printed in Canada. 3000/01/21